

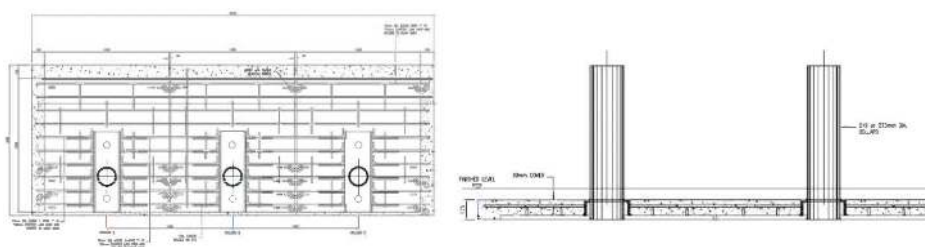


APT40SH BOLLARDS (BSI PAS6:2013) V/7500 (N2)/64/90:4.7/9.2

ULTRA-SHALLOW FOUNDATION BOLLARD

Eagle Automation have a full and wide range of PAS68:2013 rated bollards. Our static bollard range includes the world's first surface mount bollard - 30SM, an ultra-shallow foundation bollard - 40SH, a shallow foundation single unit bollard - 30SH and mid depth foundation bollards - 30/40/50ST.

We also offer a range of different diameters with many of our bollards having removable options. Automated products include full depth & shallow foundation rising bollards with Zero penetration at 30mph - 30A, 30AT, and a full depth 50mph bollard - 50A.



KEY ELEMENTS

- ▶ Bollard rated with N2 7.5ton vehicle at 40mph / 64kmh
- ▶ Diameter: 273mm (tested) also available in 219mm
- ▶ Rated Height: 1000mm above FFL
- ▶ Finish: Painted / Optional Stainless Steel Sleeve
- ▶ Supplied pre-fabricated with base plate, additional re-bar required.
- ▶ Foundation: 125mm, plus allowance for 75mm topping
- ▶ Static fixed and removable options

APT40SH BOLLARDS VEHICLE PERFORMANCE CLASSIFICATION

VEHICLE TEST WEIGHT	VEHICLE CLASS	VEHICLE SPEED	VEHICLE ANGLE	VEHICLE PENETRATION
V/7500KG	N2	64	90	4.7

