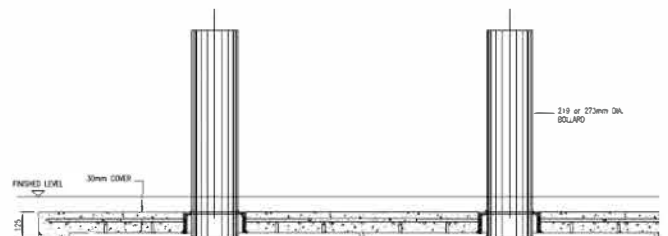
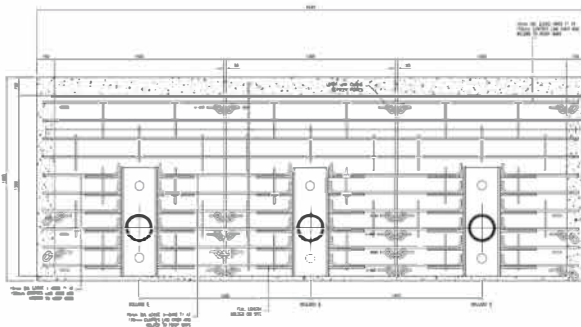


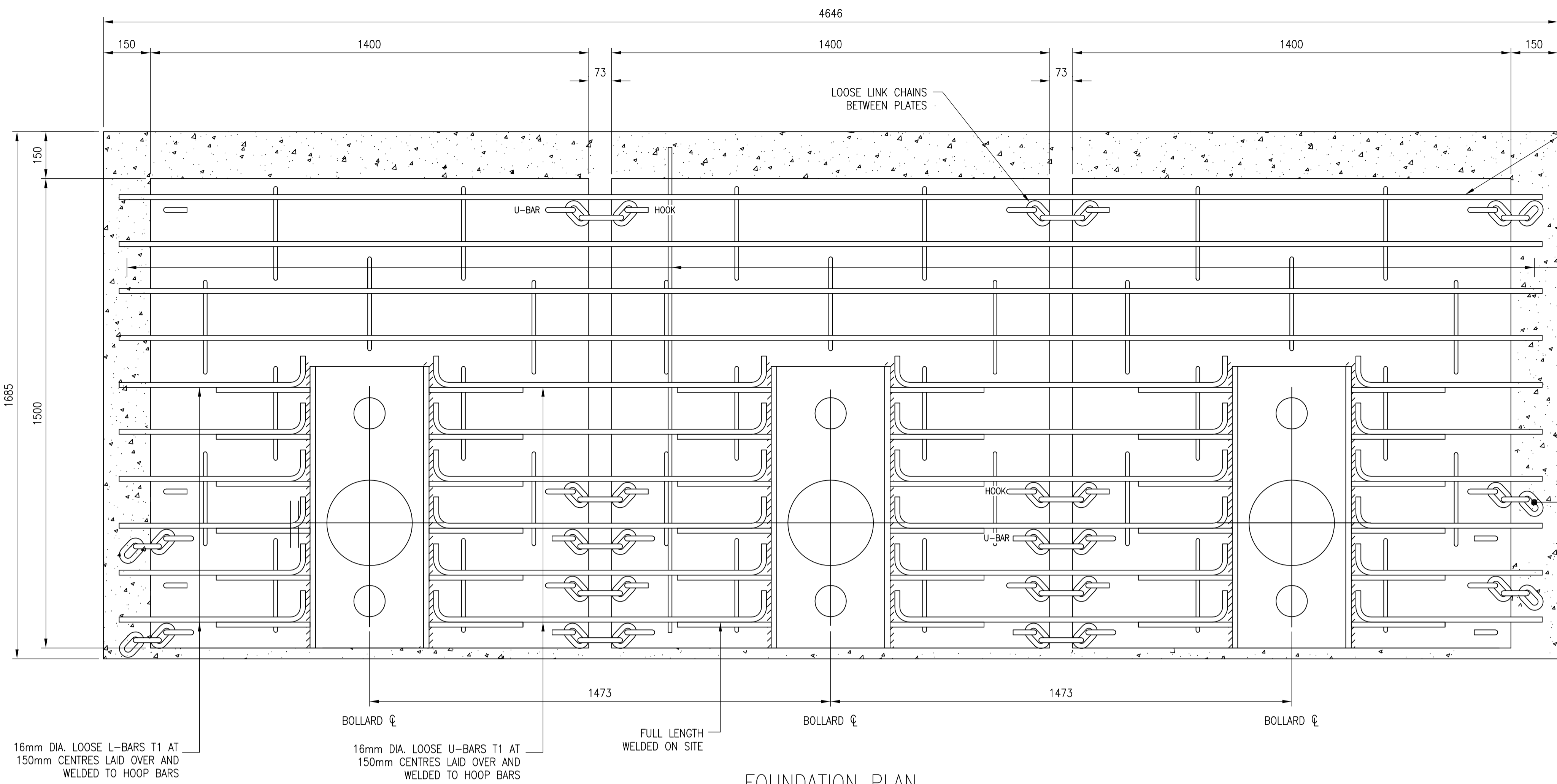
## PAS68 Static Bollards – APT40SH



Eagle Automation have a full and wide range of PAS68 tested bollards. Our static bollard range includes the world's first surface mount bollard – 30SM, an ultra-shallow foundation bollard – 40SH, a shallow foundation single unit bollard – 30SH and mid depth foundation bollards – 30/40/50ST. We also offer a range of different diameters with many of our bollards having removable options. Automated products include full depth & shallow foundation rising bollards with Zero penetration at 30mph – 30A, 30AT, and a full depth 50mph bollard – 50A.

- PAS68: V/7500(N2)/64/90:4.7/9.2
- Bollard tested with N2 7.5ton vehicle at 40mph / 64kmh
- Diameter: 272mm (tested) also available in 219mm
- Height: 1000mm above FFL
- Finish: Painted / Optional Stainless Steel Sleeve
- Supplied pre-fabricated with base plate, additional re-bar required.
- Foundation: 125mm, plus allowance for 75mm topping
- Static fixed and removable options





FOUNDATION PLAN  
SCALE 1:10

NOTES

- DO NOT SCALE FROM THIS DRAWING. ALL DIMENSIONS MUST BE CHECKED AND VERIFIED ON SITE
- CONCRETE TO BE CLASS C40/50 DC CLASS 3 WITH 10mm MAX. AGGREGATE SIZE, S3 CONSISTENCY. ALL IN ACCORDANCE WITH THE REQUIREMENTS OF BS.8500-1:2002
- EACH PLATE FREE STANDING AND CONNECTED BY CHAIN LINKS TO ALLOW FOR ELEVATION + DIRECTIONAL CHANGE.

16mm DIA. LOOSE BARS T1 AT 150mm CENTRES LAID OVER AND WELDED TO HOOP BARS

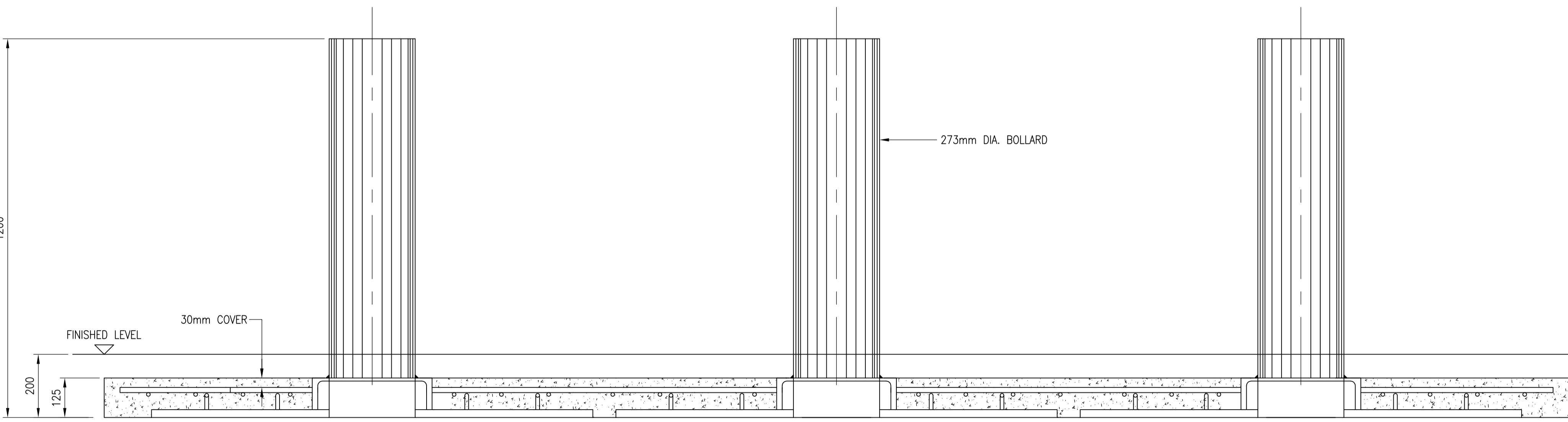
12mm DIA. LOOSE BARS T2 AT 150mm CENTRES TIED TO T1 BARS OVER.

CONCRETE SURROUND/ENCASEMENT TO BOLLARD FOUNDATIONS, REFER TO NOTE 2

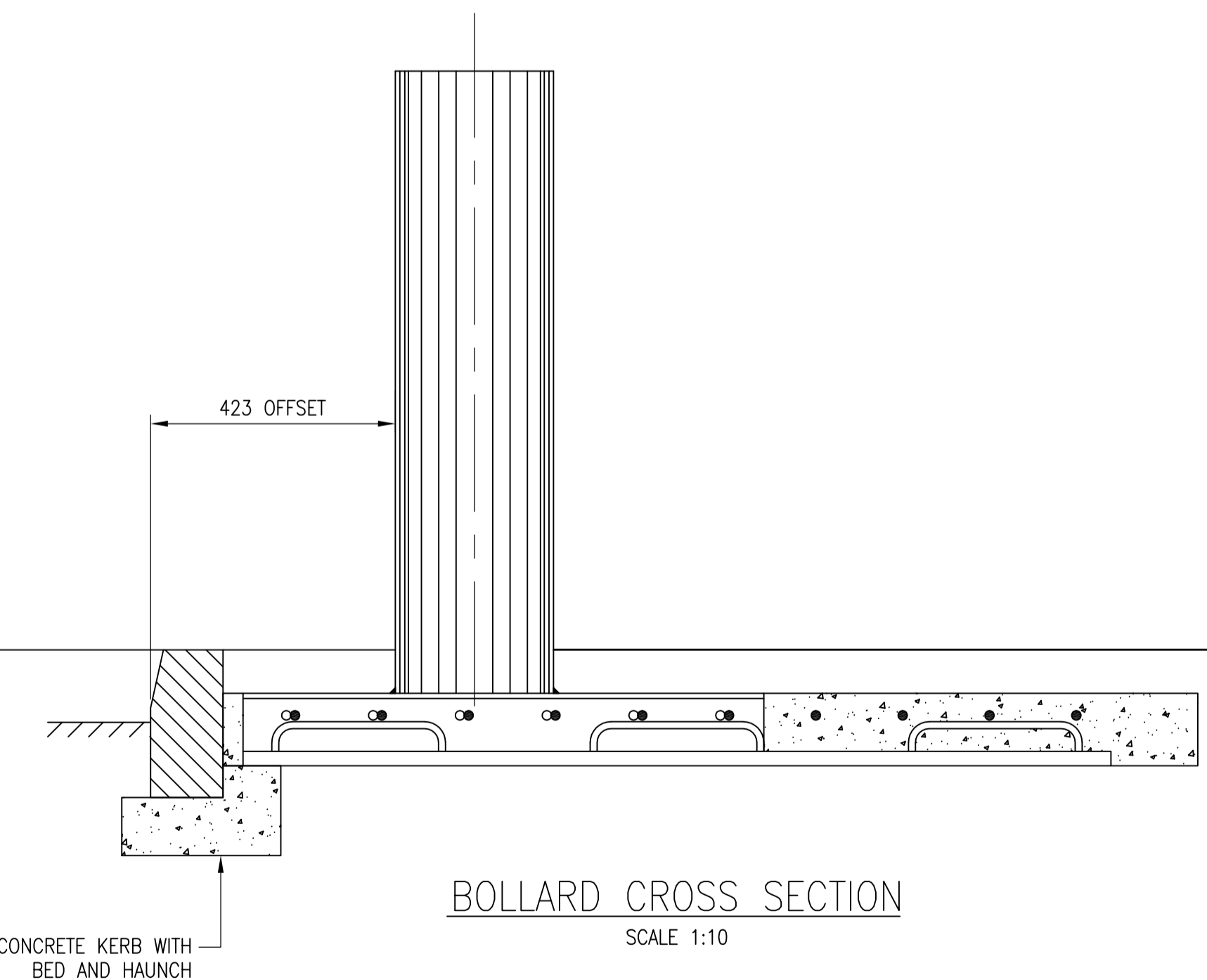
16mm DIA. LOOSE L-BARS T1 AT 150mm CENTRES LAID OVER AND WELDED TO HOOP BARS

16mm DIA. LOOSE U-BARS T1 AT 150mm CENTRES LAID OVER AND WELDED TO HOOP BARS

FULL LENGTH WELDED ON SITE



BOLLARD LONG SECTION  
SCALE 1:10



BOLLARD CROSS SECTION  
SCALE 1:10

THIRD ANGLE PROJECTION

DRAWN BY: **D. McKAY**  
CHECKED BY:  
APPROVED BY:  
UNLESS STATED ALL DIMS. IN: **mm**

THIS DRAWING HAS BEEN PREPARED AS A GUIDE TO THE INSTALLATION OF APT CONTROLS EQUIPMENT. IT IS THE CUSTOMERS RESPONSIBILITY TO CHECK ITS ACCURACY AND SUITABILITY AND REPORT IMMEDIATELY IF INCORRECT. NO LIABILITY IS ACCEPTED FOR ERRORS OR OMISSIONS.  
  
COPYRIGHT OF THIS DRAWING IS OWNED BY APT CONTROLS LTD. AND MAY NOT BE COPIED IN WHOLE OR IN PART OR USED IN ANY MANNER WHATSOEVER WITHOUT PRIOR WRITTEN APPROVAL.

ISS	DATE	BY	REVISIONS
A	25/03/11	DM	INITIAL ISSUE.

SCALE: **1:10**  
DO NOT SCALE DRAWING.  
TOLERANCES:  
UNLESS OTHERWISE STATED

MATERIAL:  
FINISH:

JOB TITLE: **APT 40SH (273) SHALLOW MOUNTED BOLLARD**  
DRAWING TITLE: **FOUNDATION DETAIL**



DRAWING No. **82-101-009** ISSUE **A**