

TECHNICAL DATA

CERTIFIED TO



M50 BOLLARD - MOVABLE (HYDRAULIC)

Design	High security bollard in compact style with integrated hydraulic aggregate and separate control unit for up to five bollard units
Impact Load	1852 kJ (7.5 t @ 80 km/h) Crash test certified according to PAS 68:2013 V/7500[N3]/80/90:5.2/7.8, IWA 14-1:2013 V/7200[N3C]/80/90:5.5 and ASTM F 2656-07 M50/P2
Blocking Element	Diameter: 355mm, 30mm wall thickness
Blocking Height	1100mm above finished floor level
Emergency Operation	Bollard remains in the raised position during power failure and can be lowered manually Accumulator and rechargeable battery pack for one raising movement (RO1) with charged accumulator (optional)
Operating Times	Raising: approx. 5-6 seconds - Lowering: approx. 3-4 seconds Emergency fast operation (EFO): approx. 2-3 seconds raising (with optional accumulator)
Emergency fast operation (EFO)	Approx. 2-3 seconds raising
Wheel Load	100kN according to SLW60 – DIN 1072
Drive	2.25kW nominal power, 400 Volt AC, three phase, 50Hz
Hydraulic Fluid	Mineral oil HLP 22 or biodegradable oil Plantohyd 22 S – NWG, water hazard class 1)
Control Unit	PLC in control box for wall installation inside a building, control voltage 24V max distance between bollard and control unit: 50m
Control Box	HxWxD = 400x600x200mm, IP 66 (for single or double bollard unit) HxWxD = 600x600x200mm, IP 66 (for triple or quadruple bollard unit) HxWxD = 600x800x300mm, IP 66 (for penta bollard unit)
Control Cabinet	Control box installed in outdoor control cabinet complete with rain cover, (Optional) hygostat, thermostat, heater and outdoor coating HxWxD = 1000x800x400mm + 200mm socket (for single, double, triple or penta bollard unit) HxWxD = 1200x1200x400mm + 200mm socket (for penta bollard unit)
Mains supply	400V (3Ph + N + PE), 50Hz
Lighting (Optional)	Bollard top lighting, Ufo-shape, LED red, white or yellow
Weight	Approx. 1400kg incl. Metal housing
Colour (Standard)	Blocking element RAL 6005, 7016, 7030, 7035 or 9010 Bollard top plate galvanised finish Cover plate galvanised finish Metal housing galvanised finish
Optional Finish	Blocking element with stainless steel sleeve and stainless steel top plate
Temperature Range	-20°C – 65°C
Optional	Heating for up to -30°C

1300 558 304

TECHNICAL DATA

CERTIFIED TO



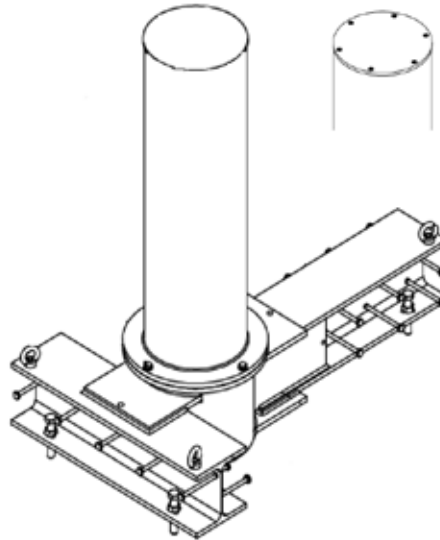
M50 BOLLARD - FIXED

Design	Blocking bollard(s) with base supports for shallow mount installation. Bollard system can be adapted on site for corner applications
Impact Load	1699kJ (6.8t @ 50mph) Crash test certified according to PAS 68 V/7500[N3]/80/90:0.4/15.4 IWA 14-1 V/7200[N3C]/80/90:0.8
Blocking Element	Diameter: 355mm with welded on steel top plate, optional: screwed on steel top plate, in galvanised finish or coated in colour of blocking element
Wall Thickness	30mm
Blocking Height	100mm
Foundation Size	4500 x 2500 x 400mm (triple unit)
Foundation Top Edge	1100mm below finished floor level
Weight	620kg
Options	Bollard top lighting, Ufo-shape, red, white or yellow Stainless steel sleeve with screwed on or welded stainless steel top plate
Colour (Standard)	RAL 6005 moss green RAL 7016 anthracite grey RAL 7030 stone grey RAL 7035 light grey RAL 9010 pure white
Colour (Optional)	Other RAL colours or DB colours

1300 558 304

TECHNICAL DATA

CERTIFIED TO



M50 BOLLARD - REMOVABLE

Design	Removable blocking bollard(s) with base supports for shallow mount installation. Bollard system can be adapted on site for corner applications
Impact Load	1699 kJ (6.8t @ 50mph) (no crash test certification, based on design of crash rated M50 shallow mounted fixed bollard)
Blocking Element	Diameter: 355mm with welded on steel top plate, optional: screwed on steel top plate, in galvanised finish or coated in colour of blocking element
Wall Thickness	30mm
Blocking Height	1100mm
Foundation Size	4500 x 2500 x 400mm (triple unit)
Foundation Top Edge	100mm below finished floor level
Weight	710 kg
Options	Bollard top lighting, Ufo-shape, red, white or yellow Stainless steel sleeve with screwed on or welded stainless steel top plate
Colour (Standard)	RAL 6005 moss green RAL 7016 anthracite grey RAL 7030 stone grey RAL 7035 light grey RAL 9010 pure white
Colour (Optional)	Other RAL colours or DB colours

1300 558 304